



iWEB New Release Information

Version 1.10
May 8, 2009

Presented by:
Tech Systems, Inc.

If you have modified ***iWEB*** programs and Tech Systems enhances or fixes the standard program, your modified (or custom) program must be updated to take advantage of the enhancements and fixes. Please contact our Custom Programming department for a quotation.

The integraSoft® symbol and verbiage is a registered trademark of Tech Systems, Inc. All usage of the integraSoft® logo or ingetraSoft® symbol must be authorized in writing by Tech Systems, Inc.

Installation & Special Software Instructions

Installation Instructions

Definition

The following instructions must be performed in the order given. If you have any questions, please contact your support consultant.

1. Make sure you have a verified backup prior to installing the new iWEB update and remove all media (i.e. tapes & diskettes from your system.
2. Ensure the Maximum MF Directory Server Object Count is set to 4096. From the MF Enterprise Server Administration, Select Options under Configure and then select the General Tab.
3. Ensure all operators are out of the iWEB & iPOS software and insert the installation CD.
4. From the console login as root:

Login: root (Press ENTER)

Password: #### (Enter your password and press ENTER)

cd / (Press ENTER)

5. If you received a CD that contains the **iWEB** software, perform the following command depending on the Operating System you are on:

*Note: You may receive an error /mnt directory already exists when performing the first step in either Operating System section. That is fine, ignore the error message and continue.

For LINUX Operating System:

mkdir /mnt (Press ENTER)

mount /dev/cdrom /mnt (Press ENTER)

*Note: You may receive the message–Mount:block device /dev/cdrom is write-protected, mounting read only
This is a normal warning message and you can go ahead and continue.

cp /mnt/isweb.tar.gz /isweb (Press ENTER)

umount /mnt (Press ENTER)

For UNIXWARE Operating System:

mkdir /mnt (Press ENTER)

mount -F cdfs -r /dev/cdrom/cdrom1 /mnt (Press ENTER)

cp /mnt/isweb.tar.gz /isweb (Press ENTER)

umount /mnt (Press ENTER)

6. cd /isweb
7. Perform the command below depending on the Operating System you are on:

For LINUX Operating System:

tar zxvf isweb.tar.gz

For the UNIXWARE Operating System:

guntar zxvf isweb.tar.gz

8. sh install/iswebinstall.sh (press ENTER)

Special Software Instructions

Definition

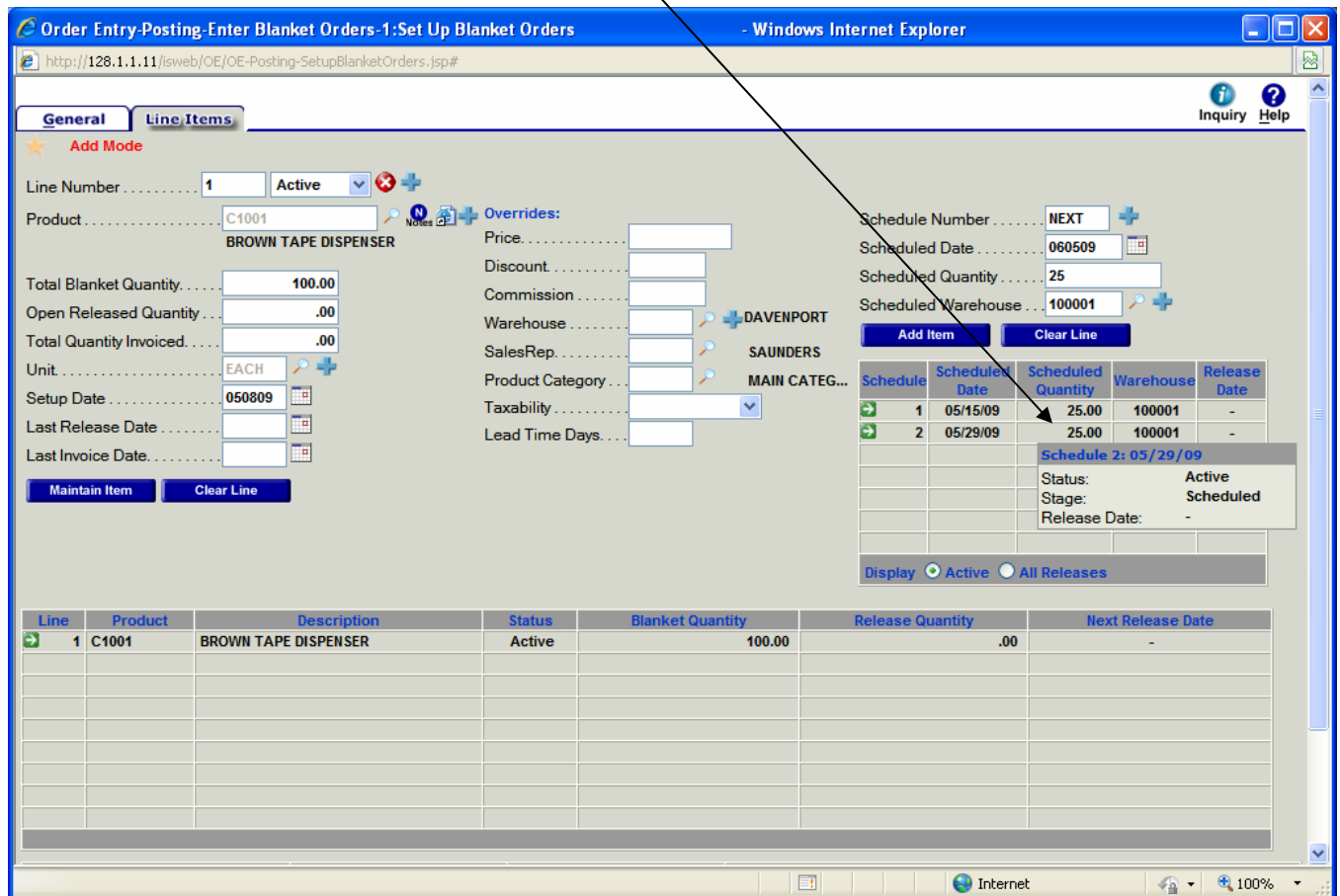
1. If the customer has never run the Order Entry / Hold Orders Inquiry feature before, please reorganize OEMAIN and ensure key 10 exists when finished.

Order Entry / Blanket Orders

Definition

Setup, Posting, and Reports for Blanket Orders have now been released in Version 1.10 of iWEB.

- Posting – Workflow of Blanket Orders is set up in much the same way as the regular Enter Orders feature. The screen contains a General Tab for the static information of the order and a Line Items tab for the products included in this Blanket Order.
- Line Item Section – Add the Line Item and then you can set up or maintain the schedule of that line item on the right side of the screen. You can hover over the Scheduled Quantity to view additional information as shown below.



Order Entry / Maintain Order Navigation

Definition

New navigation features have been added to make it easier to maintain orders.

- Scroll bar area stays in the same area after you maintain a line. Previously, the scroll bar area would go back to the line one.
- When adding a new line item, the last lines are always shown instead of the first line items.
- The new button, Maintain & Next, is available when you are maintaining a line item. This button allows you to save changes you have entered on the current line item and automatically brings up the next line item for maintenance. Below is an example of the buttons now displayed in the line item maintenance mode of an order.

Order Entry / Hold Orders Inquiry

Definition

The Hold Orders Inquiry has now been released.

This inquiry allows you to release the order, release and print the pick ticket, view the customer inquiry, or view the order inquiry. To perform these functions make your selection from the Type column.

Type	ID DSC#	Entry Date	Ship Via	Customer #	Order #	Order Amount	On Hold Reasons
MRD	456	111903	UPS	106003	2069-000	54.63	NET 30 NET 30
MRD	456	120203	UPS	106003	2074-000	183.25	NET 30 NET 30
MRD	456	022504	UPS	666	2142-000	967.84	Credit Card Credit Card
MRD	1	031504	UPS	106002	2148-000	99.03	DATE DUE 30 DATE DUE 30
MRD	456	031604	DM	666	2152-000	2.50	Credit Card Credit Card
MRD	456	031604	DM	666	2152-001	241.33	Credit Card Credit Card
MRD	1	032404	UPS	106002	2154-000	60.77	DATE DUE 30 DATE DUE 30
MRD	456	032604	UPS	666	2170-000	108.27	NET 30 NET 30
MRD	456	033004	UPS	666	2176-000	159.59	NET 30 NET 30
MRD	1	040804	UPS	106002	2197-000	757.00	DATE DUE 30 DATE DUE 30
MRD	456	042304	UPS	106003	2199-000	558.50	NET 30 NET 30
MRD	8	081804	DM	666	2262-000	471.26	NET 30 NET 30
TSI	456	012505	UPS	666	132000189-001	403.20	NET 30 NET 30
TSI	456	012505	UPS	666	132000190-001	403.20	NET 30 NET 30
TSI	456	040505	UPS	666	132000197-001	25.20	NET 30 NET 30
MRD	19	040705	UPS	106002	2368-000	26.97	DATE DUE 30 DATE DUE 30
MRD	19	040705	UPS	106002	2370-000	36.65	DATE DUE 30 DATE DUE 30

Warehouse Number: 100001 Ship Via: Pick Printer: P132 Order By: Ascending

Cancel Display

Report Writer / Report Design

Definition

You can now design/maintain a Report Specification from iWEB version 1.10.

Enter your Primary File and a file folder will appear to the right of the file name. Click on this file folder to display all fields available in your Primary File. To select a field, double click on the field name and that field will be grayed out in the Data File Fields screen indicating you have selected this and it will be placed in the Primary Filed Selection screen. To close the Data File Fields selection screen, click on the White X at the top of this screen. You may re-open this screen at any time to add additional fields. Even if you are maintaining an existing report.

The available Related Files will be shown in a drop down in the Related To section. To choose fields from a Related File, click on the file folder beside the Related File name.

The Field Properties section is used to format how the field will print. Hover over the icons in the Field Properties section to learn about the options you have available.

Easily move field order by highlighting the field you wish to move and use the up and down arrow buttons in the Field Properties Section.

Report Layout – After setting the Field Properties for your report, you can automatically add all headings and detail line items. Modify the Field headings by clicking in that area and entering the changes you wish. Move the primary fields by clicking and dragging the field to the desired location. After you have changed the Primary Field position, you can Click on the Auto Headings button to reformat the headings to reflect the changes made.

Report Properties – You can change your Report Width from 80 columns to 132 columns and then click on the auto heading and auto layout buttons at anytime to automatically format your report to reflect the width changes made.

To save your report design, click on Save/Update in the lower right corner of the Report Writer Design screen.

Purchase Orders / Maintain Order Navigation

Definition

New navigation features have been added to make it easier to maintain purchase orders.

- Scroll bar area stays in the same area after you maintain a line. Previously, the scroll bar area would go back to the line one.

Purchase Orders / RRAR / Generate RRAR

Definition

There is a new feature available on the RRAR/DAR generation called Worksheet View. This field is located in the lower left corner of the screen. If you leave this unchecked, the RRAR/DAR generate as they always have. If you check this box, a new on-screen editable worksheet report displays to your screen. You no longer have to Maintain a RRAR and Perform the Function Release a RRAR for minor changes. You can do that all right from the Worksheet View.

- Illustration A – If the quantity in the usage column is in red, place your cursor over that value and the system will explain that the usage during the lead time of this product is greater than the current quantity you have available. This is indicating to you that you need to take immediate action as you are going to have a stock out of this product.
- Illustration B – Click on the Order Quantity and change the quantity you wish to order. After you have made your change you can click on the save button to the right. After the change has been made that quantity and extension will appear in green. If you have forgotten what the original quantity was, hover over the changed quantity and the original quantity will be displayed.
- Illustration C – You can see additional information to help you decide on what to order or how much to order. Click on Detail to view Line Point, Order Point, Lead Time, Standard Order Quantity, etc. Click on Usage to view 12 months or 36 months of usage for this product. Click on Subs to view all substitutes available for this product.
- Illustration D – Click on Change RRAR XXX Order Quantities if you wish to increase or decrease all line items on the RRAR/DAR by a percentage.
- Illustration E – Click on the Red X by the Product Number if you wish to delete the line item all together.
- Illustration F – Check the Approved for Release button when the order is ready to become a Purchase Order.
- Illustration G – Click on the button at the bottom of the report, Release RRAR Orders to PO when you are ready to turn these temporary files into Purchase Orders.

Purchase Orders - Replenishment - Generate RRAR - Worksheet

RRAR Pre-Release Number: 16044 Approved for Release: RARR Pre-Release Number: 16044

Due Date: 5-08-09 Vendor Name: BEST IMPRESSIONS
 PO Type: PO Bill To: BILL TO ADDRESS ONE
 Terms: SPLIT 1/3 Ship To: W L LASHLEY & ASSOC
 Ship Via: UPS GROUND
 Resale#: 1234567890

[CHANGE RARR 16044 ORDER QUANTITIES](#)

Product Information	Warehouse	Current Qty Available	Usage Rate	Order Quantity	Unit of Measure	Cost	Extension	Functions
C1001 BROWN TAPE DISPENSER	000106	4	0	35.00	EACH	10.00000	\$350.00	DETAIL USAGE SUBS
C1001 BROWN TAPE DISPENSER	100001	133	0	193.00	EACH	10.00000	\$1930.00	DETAIL USAGE SUBS
C1001 BROWN TAPE DISPENSER	100006		15	24.00	EACH	10.00000	\$240.00	DETAIL USAGE SUBS

Usage During Lead Time is greater than Current Qty Available

PERIOD 1	PERIOD 2	PERIOD 3	PERIOD 4	PERIOD 5	PERIOD 6	PERIOD 7	PERIOD 8	PERIOD 9	PERIOD 10	PERIOD 11	PERIOD 12
6	8	25	11	25	15	18	23	12	16	25	31

SUBSTITUTE PRODUCT #	QTY AVAILABLE	QTY ON ORDER	VENDOR #	VENDOR NAME	LEAD TIME
6	8	25	11	25	15
18	23	12	16	25	31
0	0	0	0	0	0
0	0	0	0	0	0
0	0	0	0	0	0

C500106001 BERINGER FOUNDERS RESERVE MERLOT 750 ML USA : CALIFORNIA - RED

000001 1 0 27.00 EACH .00000 \$.00

[DETAIL](#) [USAGE](#) [SUBS](#)

RARR RELEASE OPTIONS

Begin P.O. Number: NEXT
 Recalculate P.O. Dates:
 Purchase Order Date:

[RELEASE RARR ORDERS TO PO](#)

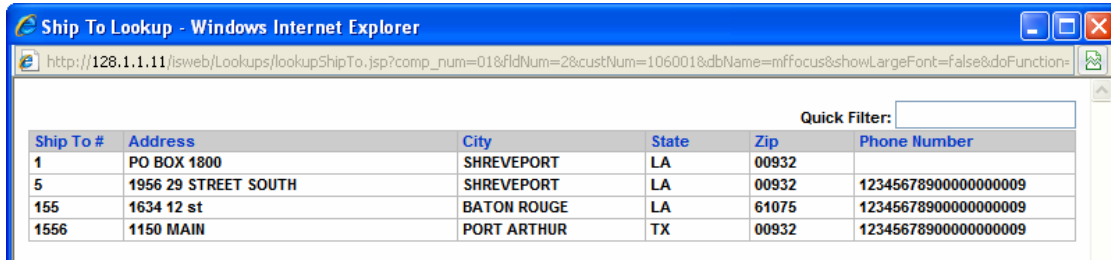
iWEB Modified Features

Lookup/ Ship To

Definition

Added City and State columns to the Ship To Lookup.

Below is an example of the new Ship To Lookup screen:



Ship To #	Address	City	State	Zip	Phone Number
1	PO BOX 1800	SHREVEPORT	LA	00932	
5	1956 29 STREET SOUTH	SHREVEPORT	LA	00932	1234567890000000009
155	1634 12 st	BATON ROUGE	LA	61075	1234567890000000009
1556	1150 MAIN	PORT ARTHUR	TX	00932	1234567890000000009